

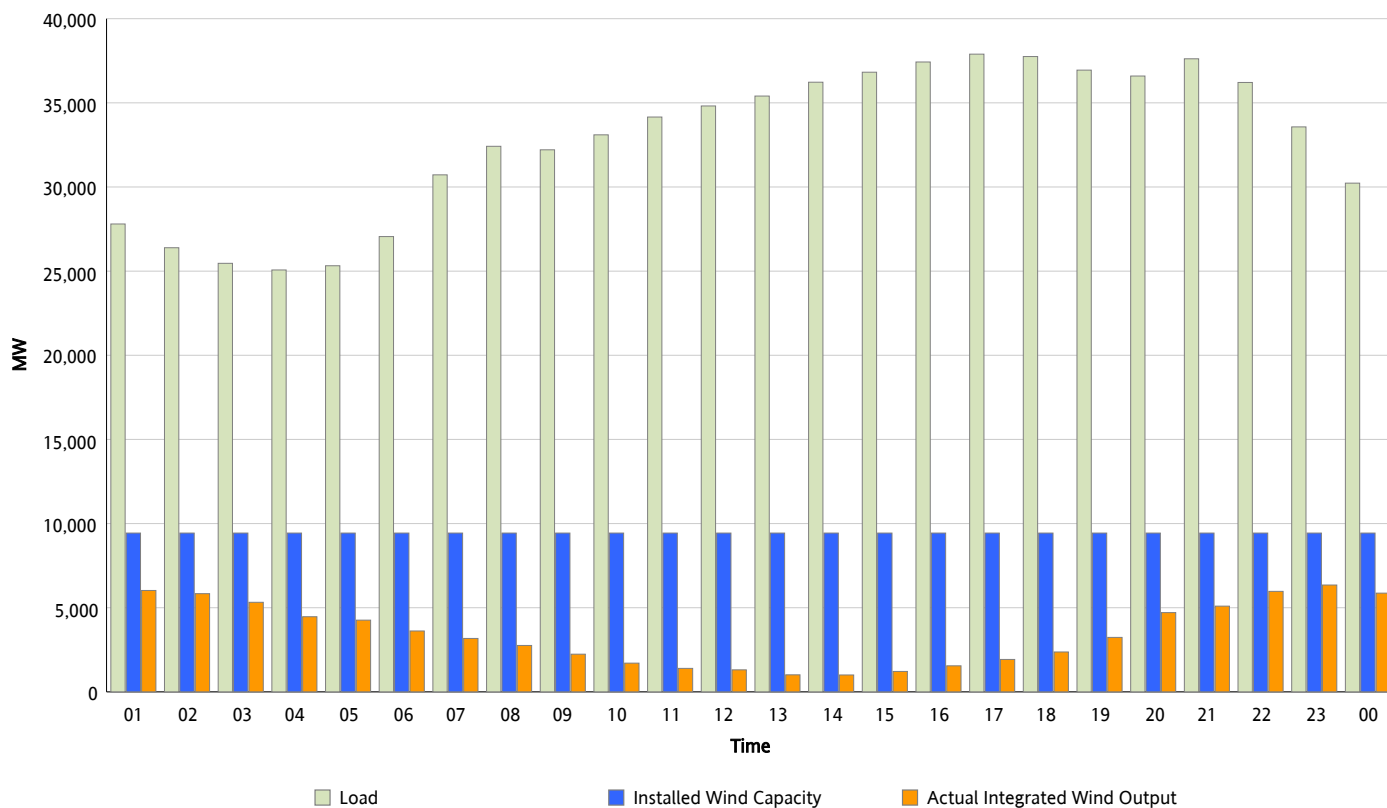


ERCOT Grid Operations

Wind Integration Report : 03/29/2012

Peak Load	37,894 MW
Load Peak Hour (HE)	17
Wind Over Peak	1,926 MW
Wind Record 03/18/12	7,917 MW
Max Wind Value*	6,494 MW
Wind Peak Time	22:37
Wind Integration %	19.53 %

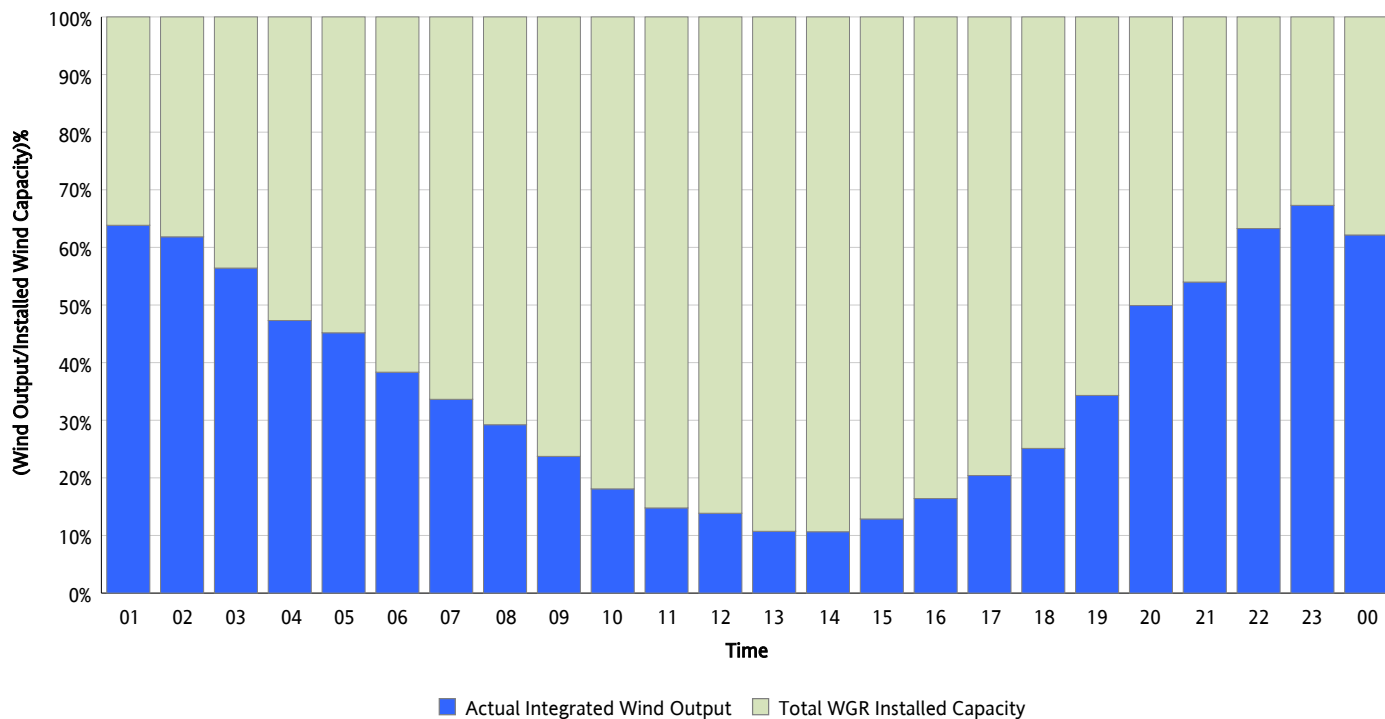
Hourly Average Actual Load vs. Actual Wind Output
03/29/2012



** Wind Record and Wind Max represent instantaneous values and the rest of the values are integrated over the hour*

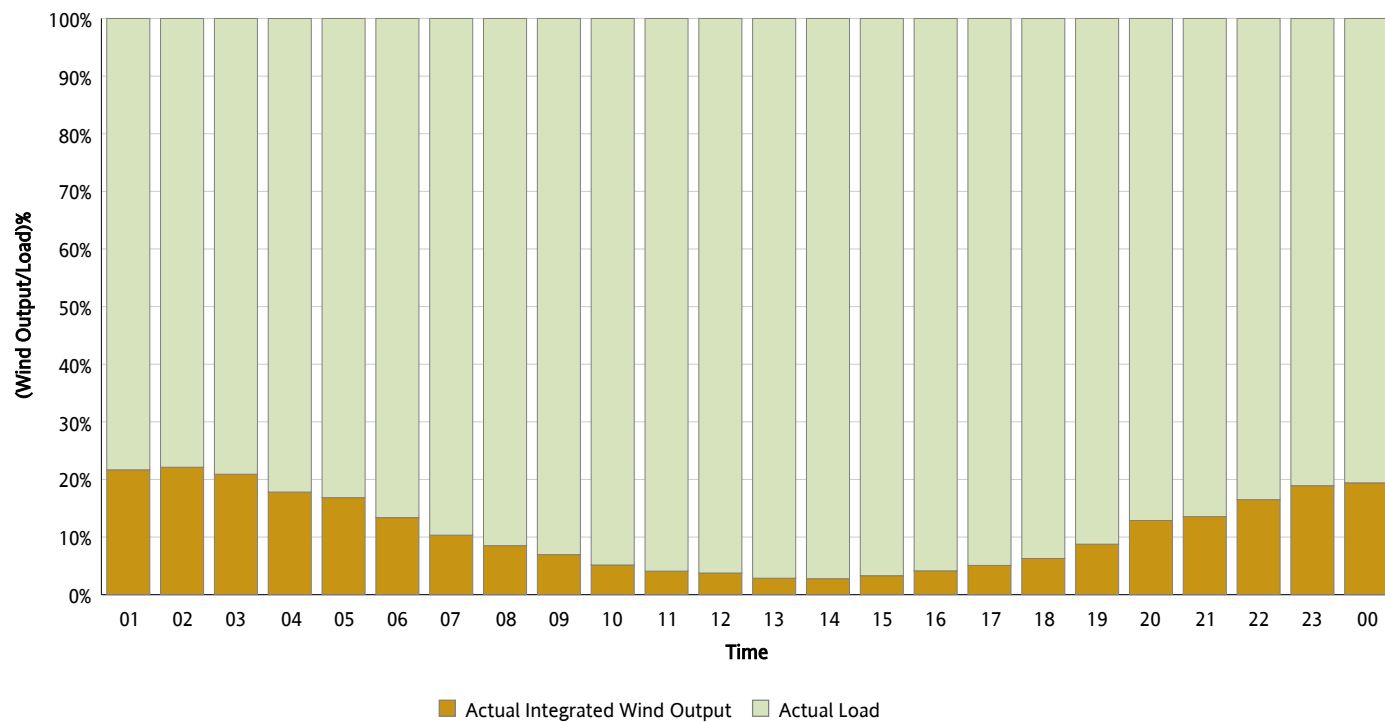
Actual Wind Output as a Percentage of the Total Installed Wind Capacity

03/29/2012



Actual Wind Output as a Percentage of the ERCOT Load

03/29/2012



ERCOT Load vs. Actual Wind Output

03/22/2012 - 03/29/2012

